

Leveraging Your Pathway Advisory Board to Engage Industry Partners and Keep Students Connected to Purpose

December 9, 2020



Housekeeping

- Use the **chat function** to ask questions and share reflections
- Stay **muted** if you are not speaking
- If you're having trouble with your internet connection, try turning your video off and/or **dialing in by phone**



Engagement

- Introduce yourself in the chat box!
- Please join us on social media today!
- Follow **@linked_learning** on Twitter and **@linkedlearningalliance** on Instagram
- Be sure to use **#LinkedLearning!**



Welcome



Dan Storz

Senior Director, K-12 Engagement
Linked Learning Alliance

Objectives

- Learn strategies for establishing and nurturing relationships with community and industry partners
- Identify ways to foster meaningful connections between students and partners
- Ensure partnerships are mutually beneficial and a good value and fit
- Share challenges and solutions for engaging partners in your local context



Keep Us Linked: Students Speak Out Amid the Pandemic

- 65% of juniors and 57% of seniors shared **being connected to employers who are involved in my pathway or academy** was helpful
- 56% of juniors and 61% of seniors shared **practicing work-related skills, such as interviewing, presenting to a group, or collaborating on a team** was valuable



KEEP US LINKED

STUDENTS SPEAK OUT AMID THE PANDEMIC



SPRING 2020 LINKED LEARNING SURVEY

Linked Learning students will shape the future of the California workforce. Numbering in the tens of thousands, many are first in their families to pursue [college and career](#) on a pathway that combines rigorous academic learning with hands-on career experience. But like many students across the country, their educational journeys were seriously disrupted as the COVID-19 crisis shuttered schools in spring 2020. To understand their realities and their needs, the Linked Learning Alliance engaged FINN Partners to conduct a survey* of Linked Learning high school juniors and seniors—those students facing critical transitions—from May to June.

ABOUT SURVEY PARTICIPANTS

1,341

Linked Learning
student
respondents

58% high
school juniors

42% high
school seniors

41%
will be the
first in their
family to
attend college

80%

students of color:
African American,
Latinx, Asian
American, other

7 school districts
represented:

Antelope Valley, Lindsay,
Long Beach, Los Angeles,
Oakland, Pasadena,
San Bernardino City

INTEGRATED PROGRAM OF STUDY

- Student cohorts
- Curriculum design
- Instructional delivery
- Assessments
- Early college credit
- Partner Input

STUDENT OUTCOMES

Equitable
College *and* Career
focused
Civic minded
Data supported

WORK-BASED LEARNING (WBL)

- WBL plan: exploration to training
- WBL experiences aligned with program of study
- Industry and self-assessment

INTEGRATED STUDENT SUPPORTS

- College AND career preparation/support
 - Social-emotional learning
 - Individual support
- Student Input and validation

Introductions



Diane Walker

Director, Industry Liaison and Post Secondary Partnerships, Antelope Valley UHSD



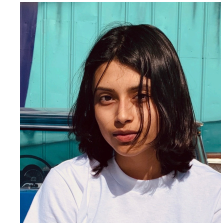
Erica Rough

Coordinator, Lancaster High School, Multimedia and Engineering Academy



Eryk Frias

Teacher, Lancaster High School, Multimedia and Engineering Academy



Jennifer Banegas

Graduate, Lancaster High School, Multimedia and Engineering Academy



Aaron Valencia

CEO & Founder, Lost Angels Children's Project, Inc., Academy Advisory Board Member



ANTELOPE VALLEY UNION HIGH SCHOOL DISTRICT



Antelope Valley Union High School District

Mission:

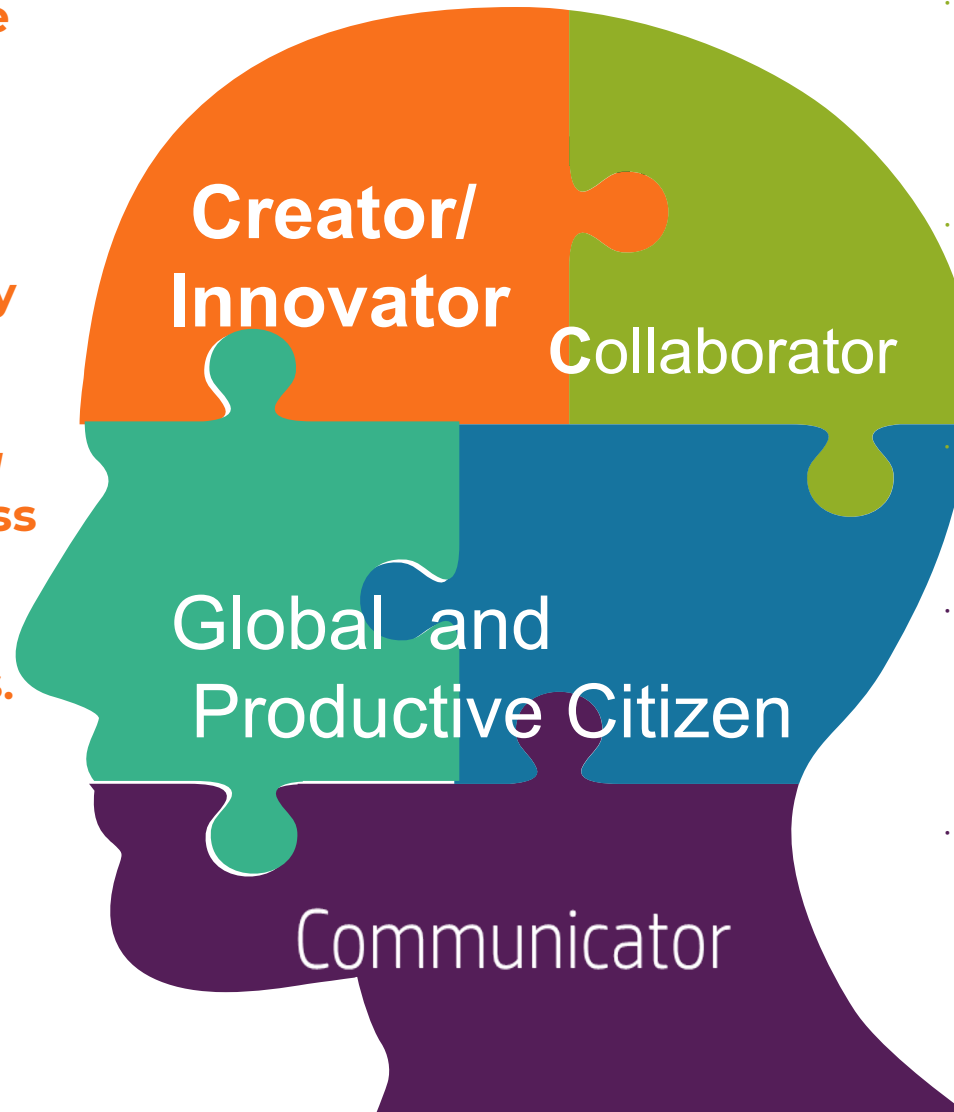
Our mission is to provide a safe and secure learning environment that promotes a **rigorous curriculum** and enables our students to develop the necessary academic, technical, and work-related **skills of the 21st century**.

Vision:

Every student who graduates will be prepared to pursue **college and any career** to which he/she aspires.

Graduate Student Profile

- **Generate and transform original ideas through the development of new products, projects and/or concepts.**
- **Integrate and synthesize information from a variety of disciplines to create value.**
- **Persevere through *taking* risks, experiencing success and setbacks while identifying solutions and continued enhancements.**
- **Make responsible, culturally responsive, mindful decisions.**
- **Build community, demonstrate global awareness and perspective.**



- **Commit to a common purpose by working with others in the effort to achieve shared goals.**
- **Adapt to dynamic situations and settings while building trust and behaving responsibly.**
- **Work successfully with a diverse group of people.**
- **Demonstrate the ability to effectively receive and deliver multiple ideas, information, and opinions.**
- **Use academic and technical language appropriate for the situation, through reading, writing, listening, speaking and the use of technology.**
- **Advocate for self and others.**

4 Academies, 3
Distinguished

CPA



40 Pathways
9 Industry Sectors

Linked Learning
2 Gold, 1 Silver, 3 Developing



District Funding
CTE Budget LCAP
Funded



Grant Funding
K12SWP, Ag Inc, CTEIG,
Perkins



Ed Services Team
CTE Admin collaborate
regularly with district
leadership



40% CTE
Enrollment
Students enrolled in at
least one CTE course



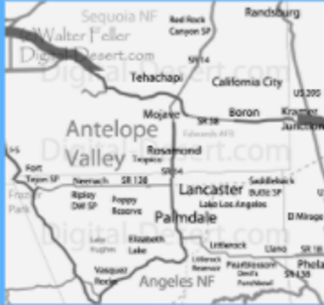
Priority Industries
Aerospace, Health
Science, Education, Info
Tech



AVUHSD Snapshot

1200

SQ. Miles



**Approximate
Size of
Rhode
Island
“Aerospace
Valley”**

11

Schools



**8 High
Schools
2 Alternative
1 Early College
1 Dependent
Charter**

21000+

Students



**Title I
District
73% SES**

78

CTE Teachers

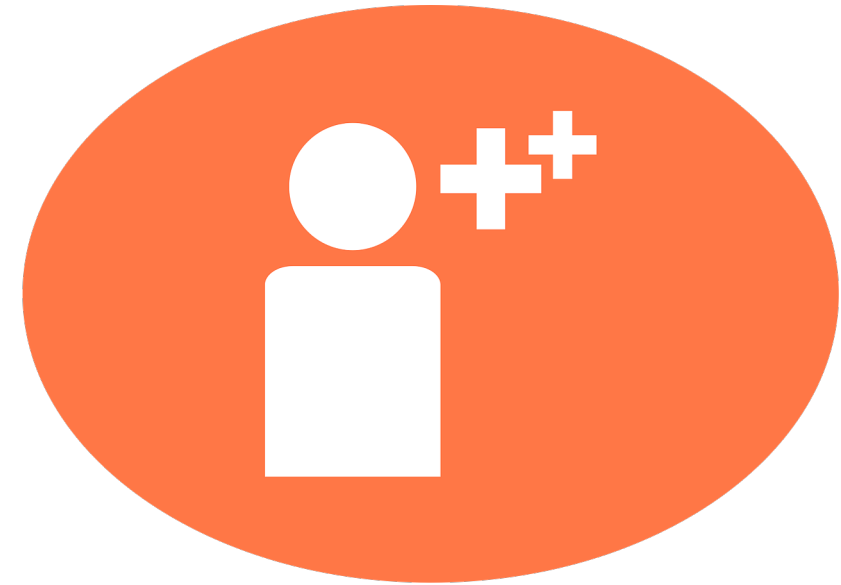


**81% of CTE
teachers
have single
subject
credential**



Advisory Member Selection

- Brainstorm potential partners based on academy theme, SLO's, district and academy goals and purposes
 - Align with mission, vision, Linked Learning pillars
 - Purposes of advisory board
- Research company or organization goals
 - Determining the win-win



Advisory Member Outreach and Onboarding



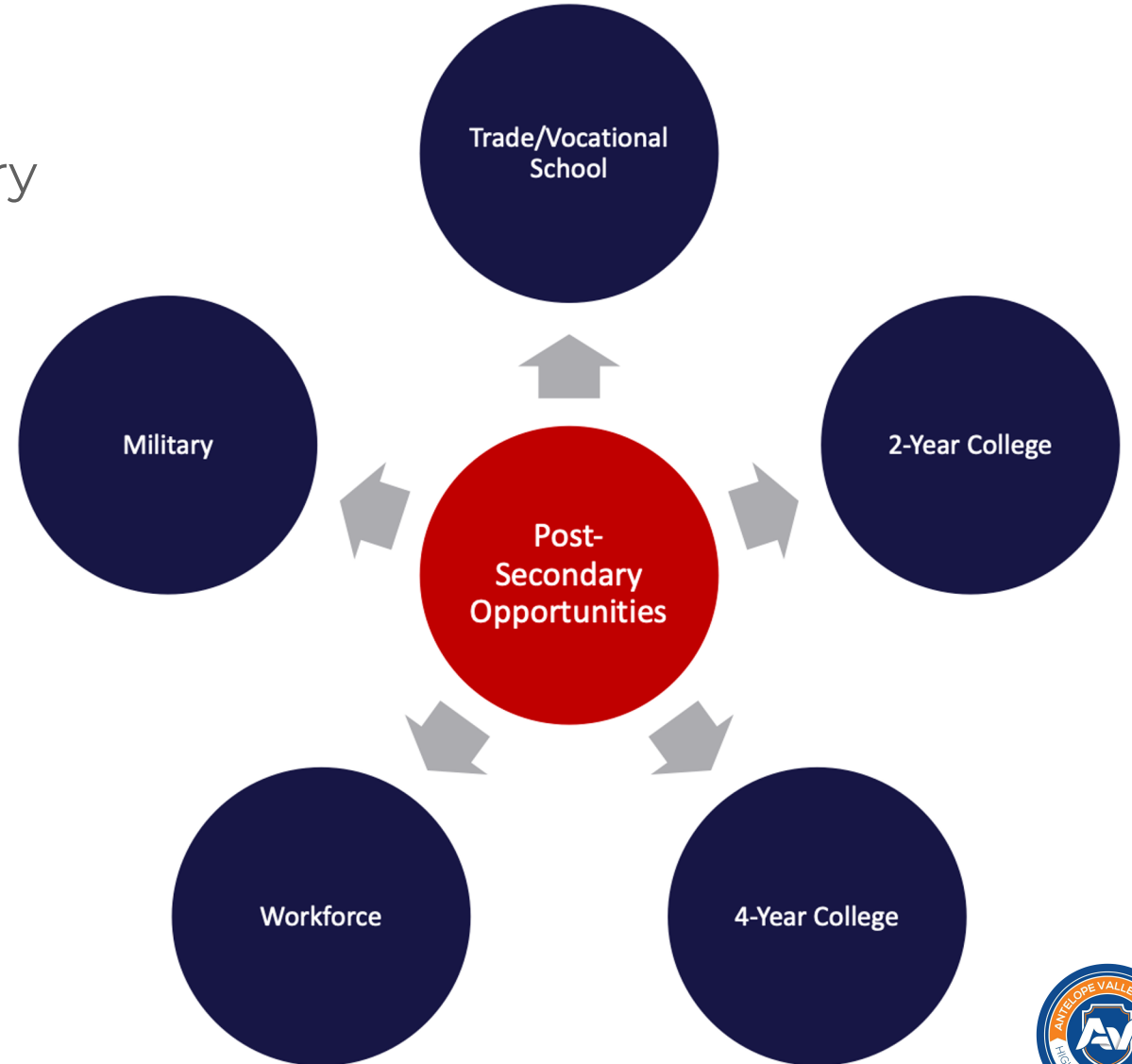
- Initial contact through networking (individual vs. company)
 - Dir., Industry Liaison and Post-Secondary Partnerships
- Purposeful meeting providing background materials
- Follow-up contacts and invitations
 - Be timely and respectful of the partner's schedule
 - Keep the partner's and your academy's goals and purposes in mind
 - Be intentional

Lancaster Multimedia & Engineering Academy



Why do we do, what we do?

- Multi-spoked approach to post-secondary opportunities
 - Trade/Vocational Certification
 - 2-Year College
 - 4-Year College
 - Workforce
 - Military



Global & Productive Citizen



GRADUATE STUDENT PROFILE



BOLD INNOVATOR

- Explores multiple creative and technological possibilities
- Gathers & synthesizes ideas to develop new or unique solutions
- Demonstrates and explains a deliberate process to complete a complex task
- Perseveres through challenges and takes risks to accomplish a task
- Integrates a variety of disciplines to create products and find solutions
- Evaluates relevant information and feedback from a variety of sources to refine products



SKILLED COLLABORATOR

- Works with diverse groups to achieve a shared goal
- Adapts to dynamic situations & settings by broadening perspective
- Builds trust with others by behaving responsibly and respectfully
- Applies knowledge of self and others to seek positive solutions to problems
- Actively listens to identify a variety of ways to solve a problem



DYNAMIC COMMUNICATOR

- Gathers and applies accurate information from a variety of reliable sources
- Clearly expresses and defends ideas using evidence
- Accurately uses industry-specific terminology
- Adjusts message according to the context, purpose, and needs of the audience
- Uses a variety of digital media to articulate a message



GLOBAL AND PRODUCTIVE CITIZEN

- Identifies a need and takes action to positively impact local, regional, and global communities
- Uses cultural awareness when working towards solutions
- Demonstrates civic responsibility by making ethical choices
- Uses democratic processes to ensure multiple perspectives are represented



GLOBAL AND PRODUCTIVE CITIZEN

- Identifies a need and takes action to positively impact local, regional, and global communities
- Uses cultural awareness when working towards solutions
- Demonstrates civic responsibility by making ethical choices
- Uses democratic processes to ensure multiple perspectives are represented



Lost Angels Children's Project

- <https://www.lostangelscp.org/mission>
- Scaffolded support extends beyond high school
 - Good Life Manufacturing - “Empower & Employ”
 - Job training cohorts, ages 18-25
 - Paid apprenticeships
 - Soft/Employability Skills training
- Relationship based on shared vision
 - “It is easier to build strong children than to repair broken men”
 - Targeted support to underserved population
- Focus on work-based learning through service
 - Positive impact on local community (Academy GSP)



PROUD PARTNERS:



America's **Job**Center
of California™

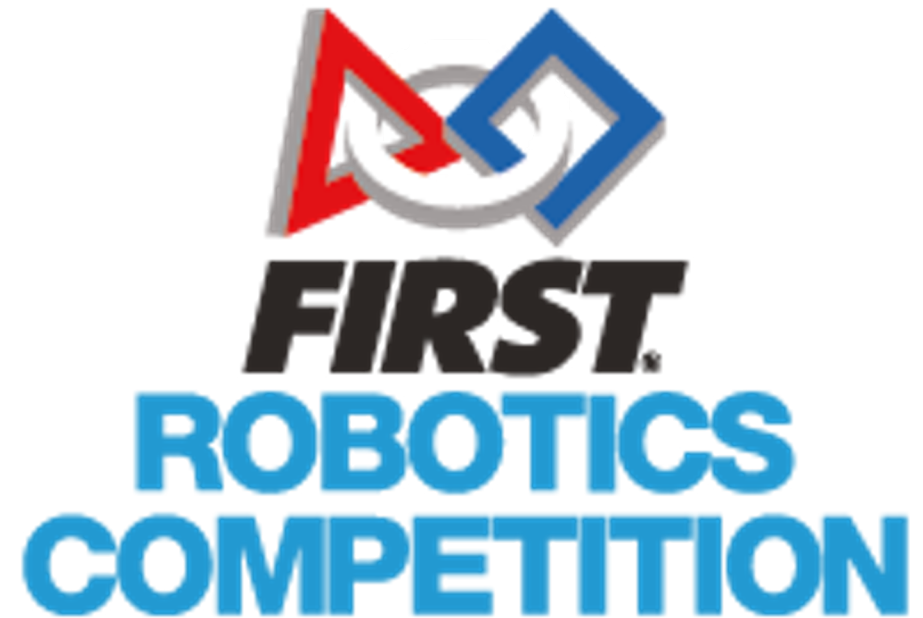
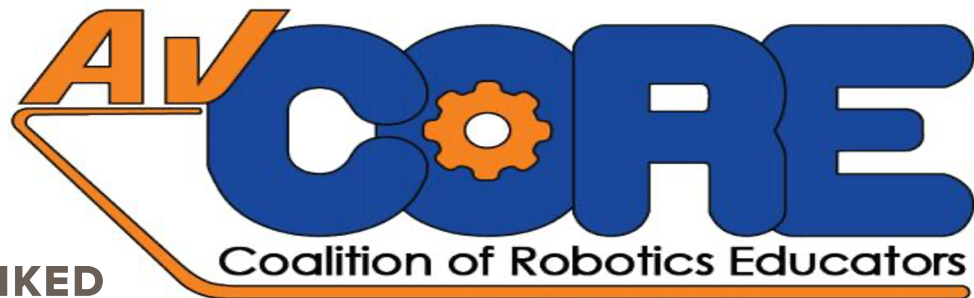
Lost Angels Children's Project

- **Aaron Valencia** Perspective
 - Benefits of community partnerships
- **Jennifer Banegas** Perspective
 - Full Circle, from student to volunteer
- **Eryk Frias** Perspective
 - Beyond the Classroom, reaching students where they are



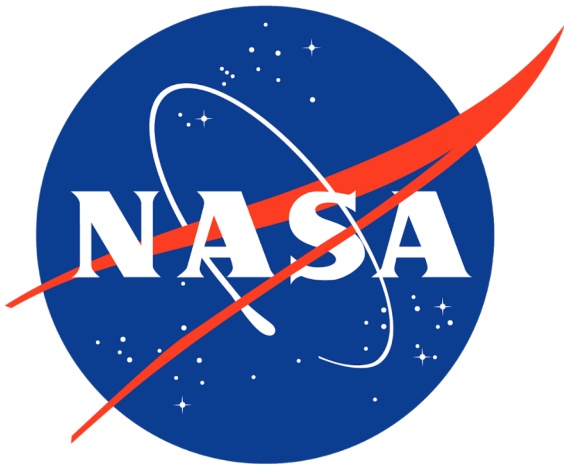
Eagle Robotics

- FIRST Robotics Team 399 - Lancaster High School
- Industry mentorship embedded in model
- Gateway for opportunities and collaboration
 - Student benefit
 - Industry benefit
 - Educator recruitment - Mr. Frias
- Model for robotics classes district-wide
- Teacher support network created
 - C.O.R.E - Coalition Of Robotics Educators



NASA UAS Project

- Parent in the audience at orientation
- Industry partner made initial contact
- Three-year project
- NASA mentors working alongside students
- Model for after-school classes at multiple sites



Breakout Prompts

- What **resonated** with you from today's conversation?
- What **questions** do you have after hearing today's speakers?
- How has what you heard today **impacted your advisory board goals**?



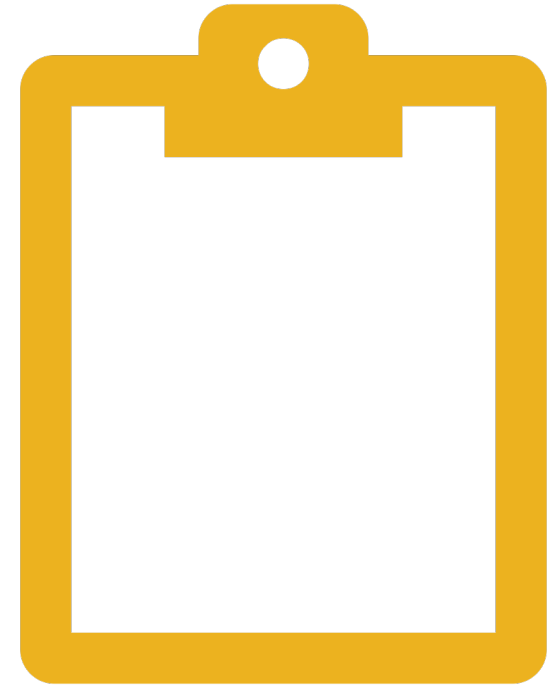
On Your Mind?



Feedback Survey

- Please take a few minutes to provide feedback on today's webinar

<https://bit.ly/39ERLVx>



Upcoming Opportunities



Mid January: Post-Secondary
Transitions Release



January 27: New Certification
Platform Launch



Late January: Student-Led
Legislative Briefing

**Learn more at
www.linkedlearning.org**